



161 Moorside Road, Bradford, BD2 3HD
Asking Price £150,000

This is a beautiful 2 bedroom stone terraced house built in 1838 which has plenty of character. The kitchen and bathroom have been modernised.

This is a popular part of BD2 this property will not be available for long.

Call today to arrange your viewing.

Locate
The Property Experts

Locate Properties UK LTD

29-31 North Parade, Bradford, West Yorkshire, BD1 3JL

t. +44 (0) 01274 720 900



@locatehomesbfd

e. info@locatehomes.co.uk



www.locatehomes.co.uk

Registered in England & Wales No. 5161728

Front Elevation



Bedroom 1

13'2" x 10'4" (4.037 x 3.155)



Lounge

14'7" x 13'4" (4.467 x 4.085)



Bedroom 2

5.021x2.204 (1.52m.6.40m x 0.61m.62.18m)

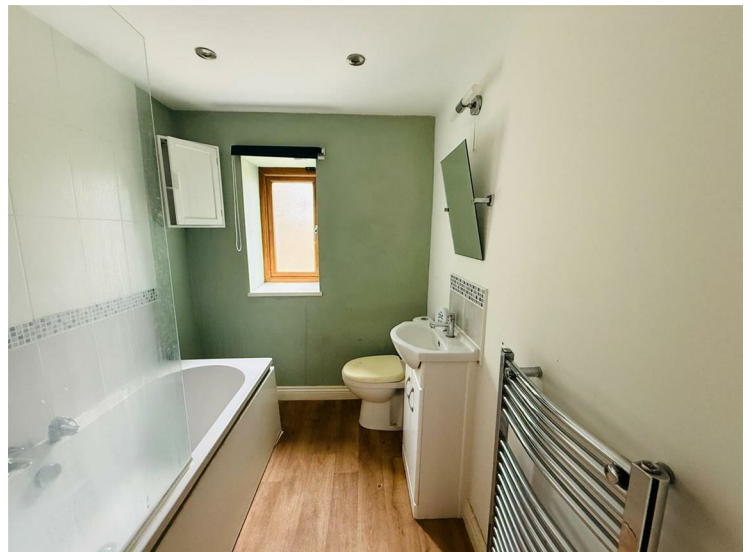


Kitchen

13'2" x 9'2" (4.034 x 2.806)



Bathroom

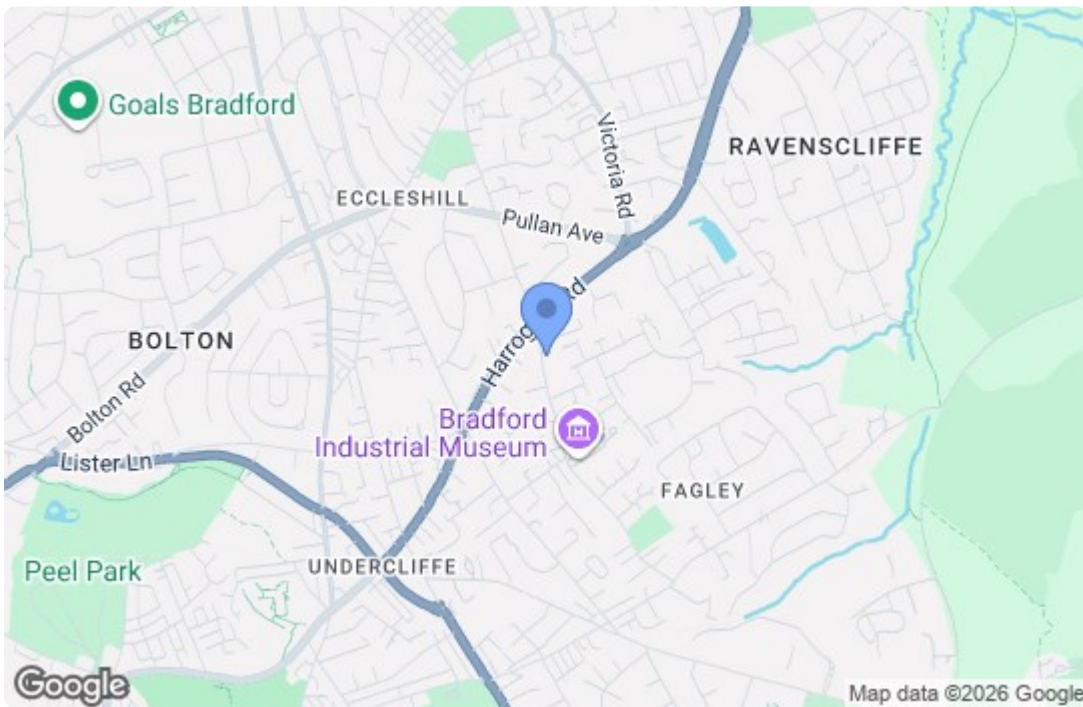


Garage



Angle 2





Energy Efficiency Rating		Current	Potential
Very energy efficient - lower running costs			
(92 plus) A			
(81-91) B			
(69-80) C			
(55-68) D			
(39-54) E			
(21-38) F			
(1-20) G			
Not energy efficient - higher running costs			
England & Wales		EU Directive 2002/91/EC	
Environmental Impact (CO₂) Rating		Current	Potential
Very environmentally friendly - lower CO ₂ emissions			
(92 plus) A			
(81-91) B			
(69-80) C			
(55-68) D			
(39-54) E			
(21-38) F			
(1-20) G			
Not environmentally friendly - higher CO ₂ emissions			
England & Wales		EU Directive 2002/91/EC	